



NATIONALRad

SPECIALISTS IN DIAGNOSTIC IMAGING

MRA CASE STUDY BRAIN WITH & WITHOUT CONTRAST

This case study is based on an actual diagnostic interpretation generated by a NationalRad board certified neuro (CAQ) radiologist.

CLINICAL INFORMATION:

Patient fell three weeks ago.

COMPARISON:

Comparison CT brain dated 11 days prior.

CONTRAST:

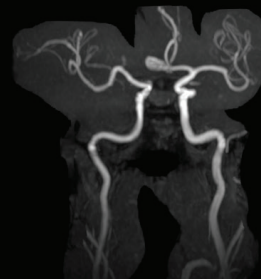
16 cc of ProHance administered without complication.

TECHNIQUE:

MR angiography of the intracranial circulation was performed utilizing three dimensional (3D) time-of-flight technique with and without intravenous contrast. This data set was reconstructed as maximum intensity pixel images and displayed in multiple rotations.

IMPRESSION:

1. Focal patent oblong aneurysm arising anterolaterally from the level of the anterior communicating artery.
2. Calcific atherosclerotic disease most evident at the level of the cavernous segments of the internal carotid artery and involving the basilar artery without significant stenosis.



NATIONALRAD

HEADQUARTERED, DEERFIELD BEACH, FLORIDA | SUBSPECIALTY RADIOLOGY SERVICES, NATIONWIDE
877.734.6674 | www.NATIONALRAD.COM | INFO@NATIONALRAD.COM